

Cat. CD3-HM157

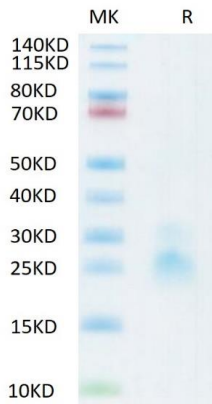
Description	
Source	Human CD3 epsilon & CD3 gamma Heterodimer Protein is expressed from mammalian with a His Tag at the C-terminal. It contains Asp23-Glu120 (CD3E) & Gln23-Gln106 (CD3G).
Accession	P07766 & P09693
Molecular Weight	The protein has a calculated MW of 16.4 kDa (CD3E) and 13.9kDa (CD3G). As a result of glycosylation, the protein migrates to 25-30 kDa based on Bis-Tris PAGE result.
Endotoxin	Less than 0.05EU per ug by the LAL method.
Purity	> 95% as determined by Bis-Tris PAGE

Formulation and Storage	
Formulation	Supplied as 0.22um filtered solution in PBS (pH 7.4).
Storage	The product should be stored at -70°C. Please do not repeated freeze-thaw cycles.

Background
 T-cell surface glycoprotein CD3 epsilon & CD3 gamma chain, also known as CD3E & CD3G, are single-pass type I membrane proteins. When antigen presenting cells (APCs) activate T-cell receptor (TCR), TCR-mediated signals are transmitted across the cell membrane by the CD3 chains CD3D, CD3E, CD3G and CD3Z. All CD3 chains contain immunoreceptor tyrosine-based activation motifs (ITAMs) in their cytoplasmic domain.

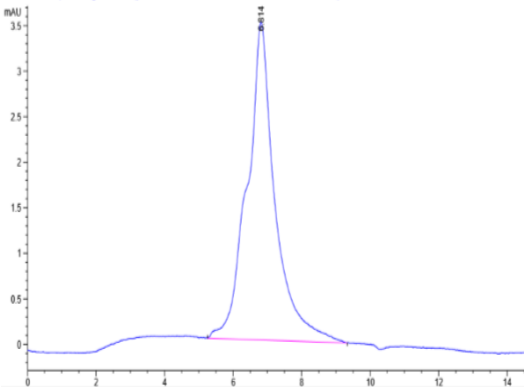
Assay Data

Tris-Bis PAGE



Recombinant Human CD3 epsilon & CD3 gamma Heterodimer Protein on Tris-Bis PAGE under reduced condition. The purity is greater than 95%.

HPLC Data



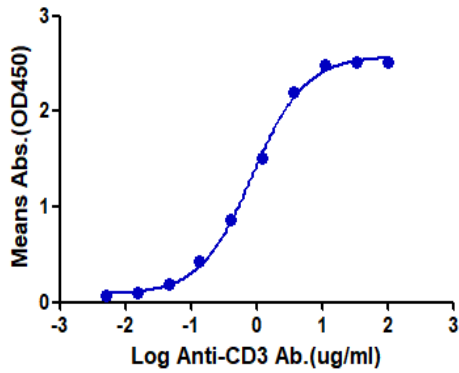
Recombinant Human CD3 epsilon & CD3 gamma Heterodimer Protein on Tris-Bis PAGE under reduced condition. The purity is greater than 95%.

Cat. CD3-HM157

Assay Data

ELISA Data

Human CD3E&CD3G, His Tag ELISA



Immobilized Human CD3E&CD3G at 2ug/ml (100ul/Well). Dose response curve for Anti-CD3 Ab. with the EC50 of 0.86ug/ml determined by ELISA.

For Research Use Only