

Recombinant Human CD3 epsilon & CD3 gamma Heterodimer Protein

Cat. CD3-HM257

Description

Source	Human CD3 epsilon & CD3 gamma Heterodimer Protein is expressed from mammalian with a Fc Tag at the C-terminal. It contains Asp 23 - Asp 126 (CD3E) & Gln 23 - Ser 116 (CD3G).
Accession	P07766 & P09693
Molecular Weight	The protein has a calculated MW of 37.8 kDa (CD3E) and 36.5 kDa (CD3G). As a result of glycosylation, the protein migrates to 40-60 kDa based on Bis-Tris PAGE result.
Endotoxin	Less than 0.01EU per ug by the LAL method.
Purity	> 95% as determined by Bis-Tris PAGE > 95% as determined by HPLC

Formulation and Storage

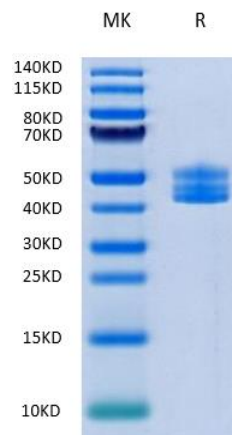
Formulation	Supplied as 0.22um filtered solution in PBS (pH 7.4).
Storage	The product should be stored at -70°C. Please do not repeated freeze-thaw cycles.

Background

T-cell surface glycoprotein CD3 epsilon & CD3 gamma chain, also known as CD3E & CD3G, are single-pass type I membrane proteins. When antigen presenting cells (APCs) activate T-cell receptor (TCR), TCR-mediated signals are transmitted across the cell membrane by the CD3 chains CD3D, CD3E, CD3G and CD3Z. All CD3 chains contain immunoreceptor tyrosine-based activation motifs (ITAMs) in their cytoplasmic domain.

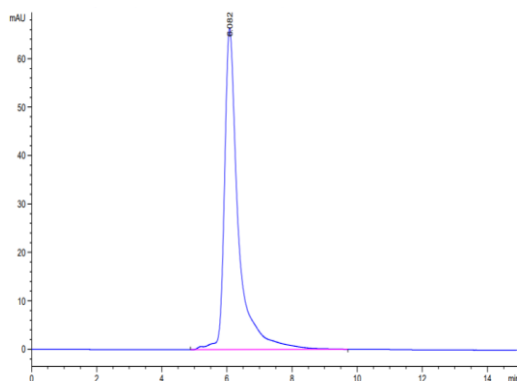
Assay Data

Tris-Bis PAGE



Recombinant Human CD3 epsilon & CD3 gamma Heterodimer Protein on Tris-Bis PAGE under reduced condition. The purity is greater than 95%.

SEC-HPLC



The purity of Recombinant Human CD3 epsilon & CD3 gamma Heterodimer Protein was greater than 95% as determined by SEC-HPLC.

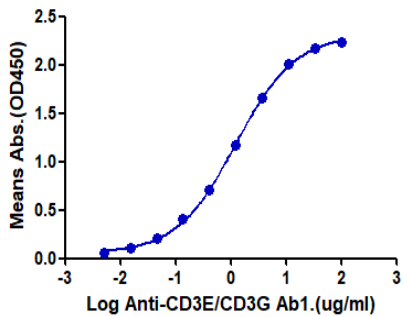
Recombinant Human CD3 epsilon & CD3 gamma Heterodimer Protein

Cat. CD3-HM257

Assay Data

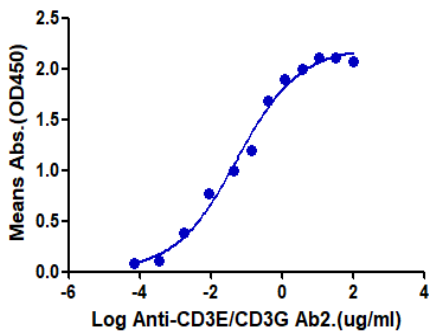
ELISA Data

Human CD3E&CD3G, Fc Tag ELISA



Immobilized Human CD3E&CD3G,Fc Tag at 0.5ug/ml (100ul/Well). Dose response curve for Anti-CD3E/CD3G Ab1.with the EC50 of 1.22ug/ml determined by ELISA.

Human CD3E/CD3G, Fc Tag ELISA

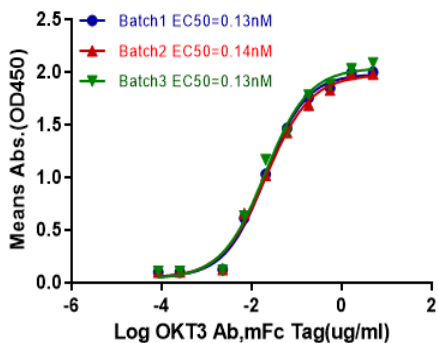


Immobilized Human CD3E/CD3G,Fc Tag at 0.1ug/ml (100ul/Well). Dose response curve for Anti-Human CD3E/CD3G Ab2.with the EC50 of 38ng/ml determined by ELISA.

Batch to Batch Consistency

Human CD3E/CD3G, Fc Tag ELISA

0.1ug Human CD3E/CD3G, Fc Tag Per Well



Immobilized Human CD3E/CD3G,Fc Tag at 1ug/ml (100ul/Well). Dose response curve for Anti-Human CD3E/CD3G Ab.(OKT3) with the EC50 of 20.7/21.0/20.0ng/ml determined by ELISA.

For Research Use Only